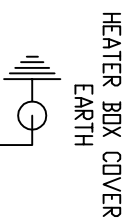
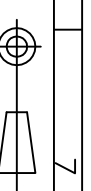
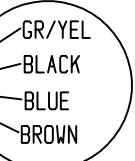
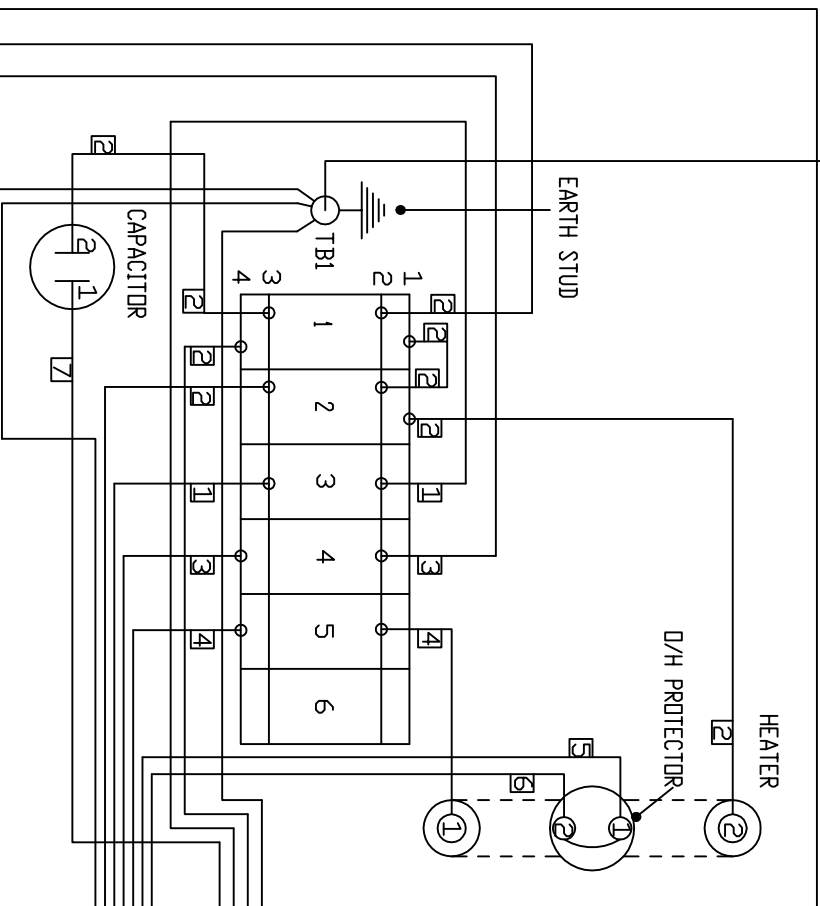


IF IN DOUBT ASK

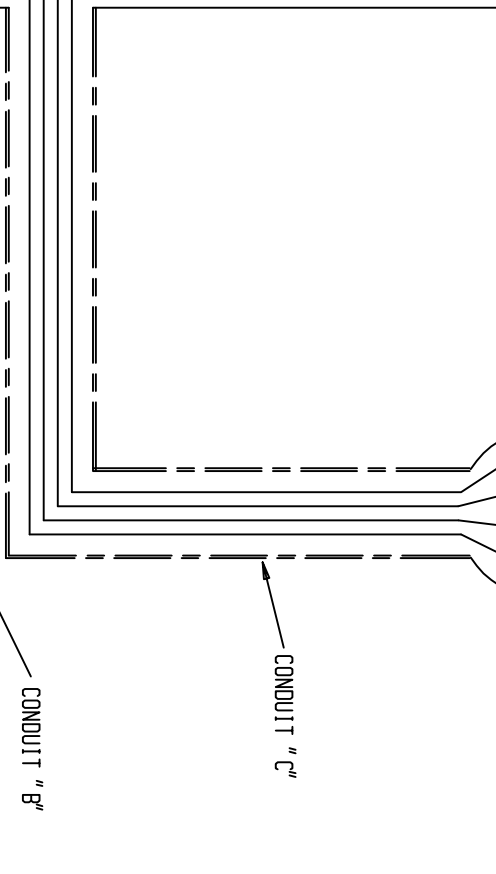
3RD ANGLE PROJECTION



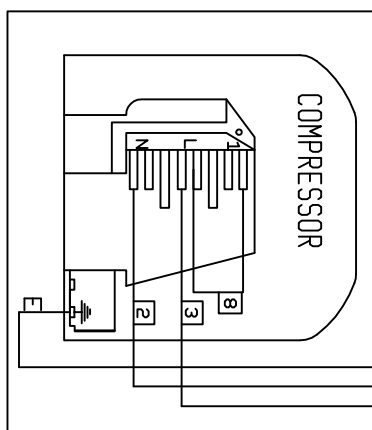
HEATER BOX



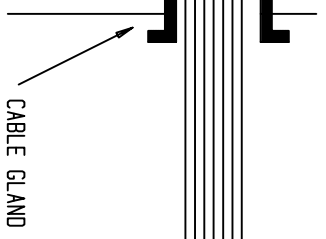
EVAPORATOR MOTOR



CONDUIT "A"



No.	FROM	TERM	TO	TERM	TYPE	COLOR	LENGTH
1	MAINS LEAD	FLY	TB1-3	F + B	4 MTS	BLACK	100
2	MAINS LEAD	FLY	TB1-2	F + B	1.5mm	BLACK	100
3	MAINS LEAD	FLY	TB1-4	F + B	7 CORE	BLACK	100
4	MAINS LEAD	FLY	TB1-5	F + B	NUMBERED	BLACK	100
5	MAINS LEAD	FLY	DHP-1	F + B	CABLE	BLACK	100
6	MAINS LEAD	FLY	DHP-2	F + B		BLACK	100
E	MAINS LEAD	FLY	EARTH STUD 1	MAR		G/YELLOW	100
1	FAN MOTOR BLUE	EXT	TB1-3	F + B	1.0	BLUE	330
2	FAN MOTOR BLACK	EXT	TB1-1	F + B	1.0	BLACK	230
7	FAN MOTOR BROWN	EXT	CAPACITOR-1	BULTT	1.0	BROWN	230
E	FAN MOTOR	EXT	EARTH STUD 1	MAR	1.0	G/YELLOW	230
2	HEATER 2	F + B	TB1-2	F + B	1.5	BLACK	220
4	HEATER 1	F + B	TB1-5	F + B	1.5	BLACK	200
2	COMPRESSOR 'N'	F + B	TB1-1	F + B	1.5	BLUE	1300
3	COMPRESSOR 'L'	F + B	TB1-4	F + B	1.5	BLACK	1300
8	COMPRESSOR 'U'	F + B	COMPRESSOR L2	F + B	1.5	BROWN	70
E	COMPRESSOR 'E'	MAR	EARTH STUD 1	MAR	1.5	G/YELLOW	1400
2	CAPCITOR-2	F + B	TB1-1	F + B	1.5	BLACK	220
2	TB1-1	F + B	TB1-2	F + B	1.5	BLACK	100
E	ELECTRICAL PANEL EARTH	MAR	HEATER BOX EARTH	MAR		BLACK	100
E	END PANEL	FASTON	HEATER BOX COVER	FASTON		G/YELL	300
E	END PANEL	FASTON	HEATER BOX COVER	FASTON		G/YELL	300
E	END PANEL	FASTON	HEATER BOX COVER	FASTON		G/YELL	300



NOTE

ALL SOLDERING JOINTS TO BE MADE USING SOLDER PART No. 3100120 AND SOLDERING IRON PART No. 3100608 CALIBRATED TO 370°C ± 5%

CUT AND STRIP OUTSIDE SHEATH OF 7 CORE CABLE TO 100mm AND 250mm

CONDUIT "A" TO BE 1000mm LONG AND Ø20mm COMP. 850mm
 CONDUIT "B" TO BE 750mm LONG AND Ø20mm MAINS 750mm
 CONDUIT "C" TO BE 300mm LONG AND Ø20mm FAN 300mm

DRG. NO. 5010390

INSPECTION PROCEDURE

ISS.	1	2	3	4	5
DATE	25/10/95	09/09/96	08/02/99	01/10/02	03/05/13
C/N		MTD	MTD	VDA	VDA
MATERIAL	FINISH				
TOLERANCE UNLESS STATED					
DIMENSIONS IN m.m.					

Ekac Limited

TITLE LD82 (GMBH)

WIRING DIAGRAM AND SCHEDULE

SECURITY CLASSIFICATION

DRG.NO. 5010390

SCALE N.T.S

A B C D E F G

1 2 3 4 5 6 7 8 9 10 11